



June 2023

WE CAN USE YOUR HELP WITH...

### CRW CLOSURES:

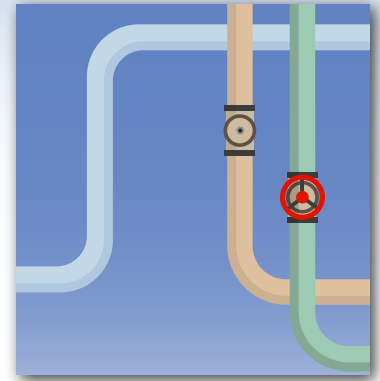
Tuesday, July 4th, to observe US Independence Day



## CUSTOMER SERVICE LINE INVENTORY (SLI)

### Why is this needed?

In 2021, the US EPA issued revisions to the Lead and Copper Rule requiring water providers throughout the country, to create an inventory of all water service lines verifying whether they are “lead” or “non-lead”. To comply with this rule revision, CRW is required to submit an inventory to the EPA by October 2024. CRW will need your help in collecting data to help us meet this deadline.

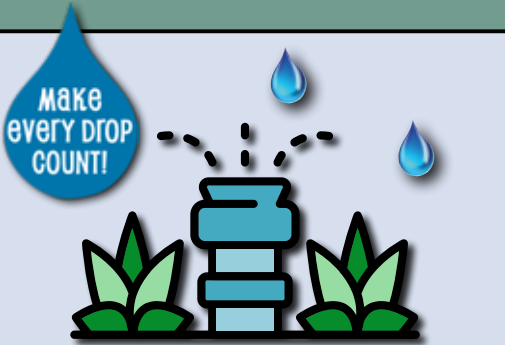


With your help we can minimize the need to individually contact customers before October 2024. Don't know? Our website provides some tools to help you figure it out. Email us at [ServiceLineInventory@crwater.com](mailto:ServiceLineInventory@crwater.com) with questions.

While CRW has no known lead service lines in our system between the water main and the customer meter, the private service lines (from meter to house) are more difficult for us to access and inspect as these are owned by the customer. To assist CRW's data collection efforts to meet this reporting requirement, we are asking customers, with homes built before 1986 to complete a survey to help us gather this information. The survey, along with additional information on lead in drinking water, can be found on our website at <https://crwater.com/lead>. **Thanks for your help!**

## BUDGET PROCESS WRAPPED-UP

At the June meeting, the CRW Board adopted the 2023-2025 Biennial Budget. Adoption by the Board concludes the budget process that started over 6 months ago. The process of developing the budget for the District involves looking at planned needs, commitments and resources needed by the District to fulfill our vision and mission of providing quality water. The initial proposed budget was prepared by staff and presented to the Budget Committee made up of CRW Board members and five citizen volunteers from within the District. Many thanks to the Budget Committee members for taking time to review, discuss, and ultimately approve a budget for the Board to consider. The adopted budget can be found on the CRW website at <https://crwater.com/financial-reports-documents/>. Of particular interest might be the “budget message” which provides useful background and information that was considered as part of the budget development. We welcome any questions. **Please call 503-722-9220.**



## CONSERVATION REBATES

CRW encourages water conservation to promote wise water use because everyone depends on water! Water must be used efficiently or there may not be enough for drinking, irrigation, commercial uses, fish, and emergencies such as firefighting. We are committed to helping our customers do whatever they can to use their water more efficiently.

As a member of the **Clackamas River Water Providers** (CRWP), CRW is offering seven water conservation rebates **up to \$485 in value**. These rebates are available each fiscal year (July 1st – June 30th) on a first-come, first-served basis until annual funds are depleted. Please allow 4-6 weeks for processing.

<https://www.clackamasproviders.org/conservation-rebates/>

# WATERING EFFICIENTLY OUTDOORS

The greatest waste of water is watering too much, too often. In the Portland metro area, our water use is at its highest during the summer months – often doubling or tripling – due to outdoor watering.

Oftentimes this is because people don't know how much water their landscape needs. It's one reason why outdoor watering, from garden hoses to in-ground sprinkler systems, is key to saving water outdoors. Below are some basic watering tips to get you started.

## Can I water efficiently by hand?

**Yes!** Watering by hand allows you to target where and how much you water. For example, you can “spot water” plants that need a little more water between regularly scheduled watering times. Adding a hose nozzle to the end of your hose will allow you to control the flow so that the water is only on when you need it.

## How much should I water my garden or landscape?

Water your garden or landscape based on your soil conditions and your plants' water needs. We recommend watering your lawn an average of one inch per week,

but check the Weekly Watering Number for this week's watering amount. Many established trees, shrubs, and perennials don't need water as frequently. Check with your local garden center or landscape professional to learn about your plants' specific water needs.

## What time of day should I water my garden or landscape?

You should water your garden or landscape before 10 a.m. or after 6 p.m. when temperatures are cooler, and the air is calmer so that less water evaporates.

## How often should I water my garden or landscape?

We recommend watering established landscapes twice a week rather than every day. Your goal is to water less often and deeply, so your soil is moist several inches down. This will help roots grow deeper, resulting in more water-efficient, drought-tolerant plants. Newer plantings, vegetables, and potted plants may need more frequent watering.

A graphic for the "2023 Drinking Water Quality Report". It features a blue wavy water splash at the top and bottom. In the center, the text "2023 Drinking Water Quality Report" is written in a bold, blue font. Below this, it says "AVAILABLE NOW AT [www.bit.ly/CRW2023WQR](http://www.bit.ly/CRW2023WQR)". To the left is a QR code. To the right is a glass of water with the text "Your water met all quality standards in 2022!".

**2023 Drinking Water Quality Report**

AVAILABLE NOW AT [www.bit.ly/CRW2023WQR](http://www.bit.ly/CRW2023WQR)

**LEARN**

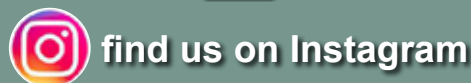
- Where your water comes from
- How your water is treated
- Steps we take to protect water quality
- How we test your water, and
- The outcomes of our water quality testing efforts in 2022

Your water met all quality standards in 2022!



The Clackamas River is the primary source of drinking water for CRW. The River starts at about 4900 feet of elevation in the Mt. Hood National Forest and heads downstream to eventually meet the Willamette River.

The EPA sets rules and regulations to ensure that tap water is safe to drink. Water Quality is our passion here at CRW. Our water is thoroughly tested and meets all State and Federal standards.



Pay your bill online at:  
[crwater.com/pay-your-bill](http://crwater.com/pay-your-bill)  
503-722-9220

Mon- Thurs 7:30 a.m. - 5:00 p.m.  
Friday 7:30 a.m. - 4:00 p.m.



16770 SE 82nd Drive, Clackamas, 97015  
503-722-9220 [www.crwater.com](http://www.crwater.com)