



April 2024

# NOTICE OF PUBLIC HEARING

## CRW CLOSURES:

Monday, May 27th, to observe Memorial Day  
Wednesday, June 19th to observe Juneteenth



## WATER RATES- MAY 15, 2024, AT 6:00 P.M.

Clackamas River Water (CRW) Board of Commissioners will hold a public Rate Hearing in the boardroom at the district office on Wednesday, May 15, at 6:00 p.m. The district office is located at 16770 SE 82nd Drive, Clackamas, OR.

The hearing will present proposed rate adjustments to CRW's water and service charges. Many factors are considered when proposing appropriate rates for our customers. Factors include water system operations, maintenance, construction, compliance with debt service coverage requirements, water use, trends in revenues and expenditures, required reserve balances, and regulatory costs.

CRW residential customers who use an average of 16 CCF (approximately 12,000 gallons) over a two-month billing cycle will see an estimated increase of \$6.40 (\$3.20 per month) in the first year and \$6.75 (\$3.38 per month) in the second year.

The Board of Commissioners would like to hear from CRW customers before making a final decision on any rate changes. All interested parties are invited to attend and hear details of the proposed rates. Customers are welcome to ask questions, make comments or state concerns. Comments can also be sent to Todd Heidgerken via email at [theidgerken@crwater.com](mailto:theidgerken@crwater.com).

The meeting is accessible to persons with disabilities. Requests for accommodations should be made at least 48 hours before the meeting to Adora Campbell at (503) 722-9226.

Your water is available  
24 hours a day and 365  
days a year, delivered  
to your home for about  
\$0.01 per gallon.

### TIP OF THE MONTH

## Spring Cleaning Around Your Water Meter Box

Now that Spring is here, at least according to the calendar, it is time to check and see if your water meter box is clear of plantings or other objects that could make it difficult to read the meter. Keeping meter boxes clear of objects helps our Meter Readers easily access the meter box to conduct timely and accurate reads.

We appreciate your help.



## Proposed Rates:

Bi-Monthly Service Charge for All Direct Service Customers			Proposed 2024-2025	Proposed 2025-2026
Meter Size (Inches)	Domestic Service Charges	Current	Service Charges	Service Charges
Full 3/4	\$64.25		\$ 67.78	\$ 71.51
1	\$88.39		93.25	98.38
1 1/2	\$126.30		133.25	140.58
2	\$174.17		183.75	193.86
3	\$272.34		287.32	303.12
4	\$418.95		441.99	466.30
6	\$785.19		828.38	873.94
8	\$1,774.66		1,872.27	1,975.24
10	\$2,791.85		2,945.40	3,107.40
12	\$3,373.09		3,558.61	3,754.33

Rate Per 100 Cubic Feet (1-CCF) - 1 CCF = 748 Gallons Single Family Dwelling (3/4 or 1"):		Proposed Rate 9/1/24	Proposed Rate 9/1/25
Volume (CCF)	Rate		
Block 1 = 1-4 CCF	\$2.74	\$ 2.89	\$ 3.05
Block 2 = 5-8 CCF	\$3.04	\$ 3.21	\$ 3.38
Block 3 = 9-24 CCF	\$3.63	\$ 3.83	\$ 4.04
Block 4 = 25 CCF & up	\$4.62	\$ 4.87	\$ 5.14

Multi-Family, Commercial & Industrial		Proposed Rate 9/1/24	Proposed Rate 9/1/25
Volume	Rate		
Block 1 = c	\$3.36	\$ 3.54	\$ 3.74
Block 2 = d	\$4.20	\$ 4.43	\$ 4.67

c-Volume up to 1.5 times average winter consumption  
d-Volume above 1.5 times average winter consumption

# ANNUAL BACKFLOW TESTING


## It is time! What do “backflow” and “cross connection” mean? Why is it important to test?

Providing safe drinking water to our customers is our primary focus, but there are ways you can help protect drinking water too! One way is to make sure you don't have any cross connections in your private plumbing system. Another way is to get your backflow prevention assembly tested annually. The property owner is responsible for preventing contaminants from entering the public water system through their private plumbing system. Where required, an approved backflow prevention assembly must be installed, maintained and tested annually to make sure it's working properly. Help protect our water system by getting your backflow prevention assembly tested by June 30, 2024.

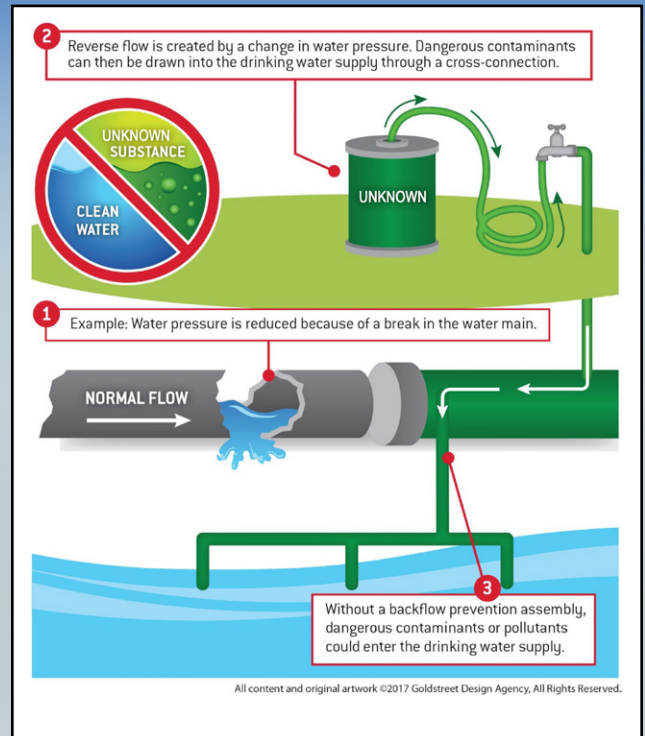
**What is backflow?** Drinking water is delivered to your tap in pressurized water pipes. Normally the water flows in one direction at constant pressure. However, under unusual circumstances such as very large main breaks or large-scale firefighting, system pressure may drop low enough to cause “backflow” conditions. Water flows backwards during these events, increasing the risk of contamination from properties not equipped with an approved backflow prevention assembly.

**What is cross connection?** A cross connection is any physical connection between piping used for drinking water and piping used for other types of water or liquids. Some of these contaminants might only affect the taste or odor of the water, but some may make the water unsafe to drink. Examples of common cross connections are hot tubs, sprinkler/irrigation systems, garden hoses, and auxiliary wells.

**REMINDER:**  
**ALL BACKFLOW TESTING IS**  
**DUE BY JUNE 30TH, 2024**



For more information:  
[www.crwater.com/backflow](http://www.crwater.com/backflow)



## DRINKING WATER WEEK- MAY 5-11



CRW joins communities across N. America in celebrating **Drinking Water Week**, an annual observance led by the American Water Works Association.

The Week serves to highlight the importance of safe drinking water and recognize the tireless efforts of water professionals who keep it flowing around the clock in our communities.

This year's celebration also coincides with a historic milestone – the 50th Anniversary of the Safe Drinking Water Act (SDWA) in the United States.



find us on X/Twitter

find us on



find us on Instagram

Pay your bill online at:  
[crwater.com/pay-your-bill](http://crwater.com/pay-your-bill)  
503-722-9220

Mon- Thurs 7:30 a.m. - 5:00 p.m.  
Friday 7:30 a.m. - 4:00 p.m.



16770 SE 82nd Drive, Clackamas, 97015  
503-722-9220 [www.crwater.com](http://www.crwater.com)